



PLASTIC COMPONENTS FOR WASTE WATER TREATMENT

Thomas provides a complete line of non-metallic components for the waste water treatment industry, available in standard UHMW or Nylon, as well as other materials.

- 78 Series Sprockets (Split or Solid)
- Chain Saver Rim Sprockets
- Wear Strips & Shoes
- Weld Washers
- 720 Series Sprockets (Split or Solid)
- Shear Pin Sprockets
- Static Shaft Bushings
- Spur Gears

FEATURE	FUNCTION	BENEFIT
Non-corrosive	Eliminates corrosion	Ideal for wet, acidic environments
More forgiving	Flexes under heavy loads	Reduces stress to chain
Runs quieter than metallic components	Lower noise levels	Ideal for use where environmental noise needs to be reduced
Self Lubricating	Reduces friction	Reduced maintenance time
Lightweight	Low coefficient of friction	Lower power use Less cost to ship Easier to install
No metal to metal contact	Less wear	Longer life - lower overall cost



CUSTOM CAPABILITIES:

When stock won't work, **Thomas** is ready, willing and able to get your custom plastic products out the door and on the truck in record time. Whether it is a simple alteration, rebore or product requiring secondary operations, **Thomas'** complete machining capabilities can handle the need "in house."

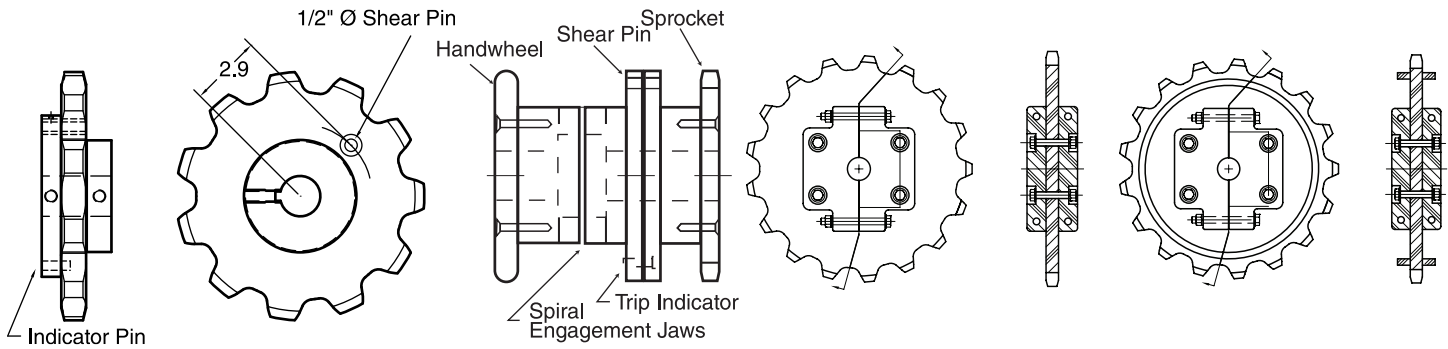
When the unexpected happens, **Thomas'** emergency service is available 24/7 to get you back up and running.



**thomas conveyor
company®**

555 N. Burleson Blvd • Burleson, TX 76028
817-295-7151 • FAX 817-447-3840 • (800) 433-2217
thomasconveyor.com

PLASTIC COMPONENTS TYPICALLY USED IN WASTE WATER TREATMENT



78 Series Shear Pin Sprocket

78 Series Jaw Clutch Sprocket

720 Series Split Sprocket

Chainsaver Rim 720C Sprocket

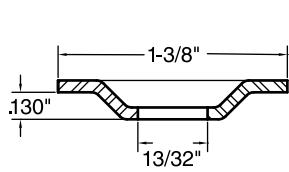
78 Series Shear Pin Sprocket		
Nylon Body & Nylon Sprocket - Includes Trip Indicator		
No. Teeth	Catalog Number	Pitch Diameter
10	78SP10NM	8.44
11	78SP11NM	9.26
12	78SP12NM	10.08
13	78SP13NM	10.90

78 Series Jaw Clutch Sprocket		
Nylon Body & UHMW Sprocket - Includes Trip Indicator		
No. Teeth	Catalog Number	Pitch Diameter
11	78JC11NM-*	9.26
12	78JC12NM-*	10.08
13	78JC13NM-*	10.90

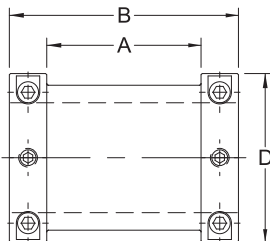
→ R for Right Hand
* L for Left Hand

720 Series Split Sprocket		
UHMW sprocket plates & hubs - 304 SS hardware		
No. Teeth	Catalog Number	Pitch Diameter
11	720C11NMS	11.10
13	720C13NMS	12.89
17	720C17NMS	16.59
19	720C19NMS	18.45
21	720C21NMS	20.33
23	720C23NMS	22.21
25	720C25NMS	24.10

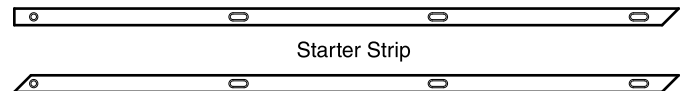
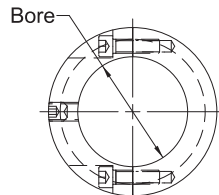
Chainsaver Rim 720CS Sprocket		
No. Teeth	Catalog Number	Pitch Diameter
11	720CS11NM	11.10
13	720CS13NM	12.89
17	720CS17NM	16.59
19	720CS19NM	18.45
21	720CS21NM	20.33
23	720CS23NM	22.21
25	720CS25NM	24.10



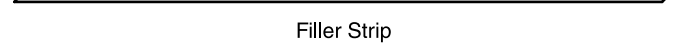
Weld Washers



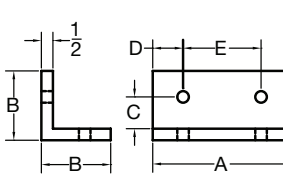
Static Shaft Bushings



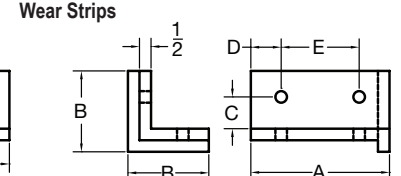
Starter Strip



Filler Strip



Carrying Wear Shoe



Return Wear Shoe

Wear Shoes

Weld Washers		
Used to fasten wear strips to rails and tank floors.		
Catalog Number	Material	Diameter (Inches)
WTWW1375	Stainless Steel	1-3/8

Static Shaft Bushings		
Protect shafts from damaged caused by idler sprockets. Manufactured from green oil-filled nylon with ss hardware.		
Catalog Number	Req. Sprocket Bore (Inches)	Max. Shaft Size (Inches)
WTB4700	3-3/4 Idler	2-15/16
WTB6400	5 Idler	4
WTB7200	5-1/4 Idler	4-1/2
WTB8400	6 Idler	5-1/4

Wear Strips		
Wear strips include slots for weld washer. Length 120"		
Filler Wear Strips		
Catalog Number	Thickness (Inches)	Width (Inches)
WTF1000	3/8	2-5/8
WTF1002	3/8	3
WTF1003	1/2	2-1/2
WTF1004	1/2	3
Starter Wear Strips		
Catalog Number	Thickness (Inches)	Width (Inches)
WTS1100	3/8	2-5/8
WTS1102	3/8	3
WTS1103	1/2	2-1/2
WTS1104	1/2	3

Wear Shoes		
We can manufacture wear shoes for your application. Just fax a sketch or drawing and we'll quote.		
Carrying Wear Shoes		
Catalog Number	Length (Inches)	Height (Inches)
WTWS1001	5-1/2	3
WTWS1550	5-1/2	3
WTWS1600	6	3
Double Hole Return Wear Shoes		
Catalog Number	Length (Inches)	Height (Inches)
WTWS3400	4	3-1/2
WTWS3450	4-1/2	3-1/2
WTWS3600	6	3-1/2

555 N. Burleson Blvd • Burleson, TX 76028 • 817-295-7151 • FAX 817-447-3840

thomasconveyor.com